

IBM Kenexa BrassRing on Cloud

*IBM Kenexa BrassRing on Cloud
Release Notes*

April 2017



Note

Before you use this information and the product it supports, read the information in "Safety and environmental notices" on page x and "Notices" on page x.

This edition applies to the April, 2017 version of IBM Kenexa BrassRing on Cloud and to all subsequent releases and modifications until otherwise indicated in new editions.

© **Copyright IBM Corporation 2017.**

US Government Users Restricted Rights – Use, duplication or disclosure restricted by GSA ADP Schedule Contract with IBM Corp.

Terms and conditions for product documentation

Permissions for the use of these publications are granted subject to the following terms and conditions.

Applicability

These terms and conditions are in addition to any terms of use for the IBM® website.

Personal use

You may reproduce these publications for your personal, noncommercial use provided that all proprietary notices are preserved. You may not distribute, display or make derivative work of these publications, or any portion thereof, without the express consent of IBM.

Commercial use

You may reproduce, distribute and display these publications solely within your enterprise provided that all proprietary notices are preserved. You may not make derivative works of these publications, or reproduce, distribute or display these publications or any portion thereof outside your enterprise, without the express consent of IBM.

Rights

Except as expressly granted in this permission, no other permissions, licenses or rights are granted, either express or implied, to the publications or any information, data, software or other intellectual property contained therein.

IBM reserves the right to withdraw the permissions granted herein whenever, in its discretion, the use of the publications is detrimental to its interest or, as determined by IBM, the above instructions are not being properly followed.

You may not download, export or re-export this information except in full compliance with all applicable laws and regulations, including all United States export laws and regulations.

IBM MAKES NO GUARANTEE ABOUT THE CONTENT OF THESE PUBLICATIONS. THE PUBLICATIONS ARE PROVIDED "AS-IS" AND WITHOUT WARRANTY OF ANY KIND, EITHER EXPRESSED OR IMPLIED, INCLUDING BUT NOT LIMITED TO IMPLIED WARRANTIES OF MERCHANTABILITY, NON-INFRINGEMENT, AND FITNESS FOR A PARTICULAR PURPOSE.

Contents

Terms and conditions for product documentation iii

Introduction 1

Visible Changes 1

 Responsive Apply 1

 Recruiter. 3

Configurable Changes 3

 Responsive Apply 3

Recruiter. 3

Notices 7

Programming interface information. 9

Trademarks. 9

Terms and conditions for product documentation . . 9

IBM Online Privacy Statement 9

Safety and environmental notices 9

Introduction

This document presents changes, both visible and configurable, included in the April release of IBM Kenexa® BrassRing® on Cloud.

The objectives of this document are to:

- Present feature enhancements and usability and performance improvements that are introduced in this release.
- Document changes in system requirements, if applicable.

Visible Changes

The current release of IBM Kenexa BrassRing on Cloud included the following visible changes. Visible changes alter the appearance or performance of the product without requiring any configuration. The changes are immediately visible or available to users.

Responsive Apply

The current release of IBM Kenexa BrassRing on Cloud on Cloud includes the following Responsive Apply visible changes. Visible changes alter the appearance or performance of the product without requiring any configuration.

Pending Assessments

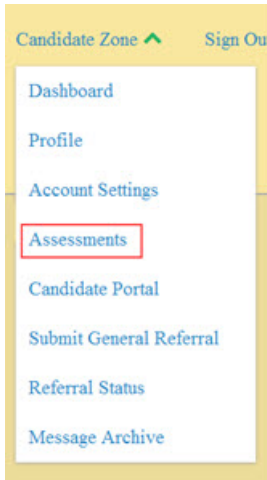
The Responsive Apply **Candidate Zone** now supports **Pending Assessments**. In Responsive Apply in the Candidate Zone Assessment section, candidates can access and start new assessments or continue partially completed assessments. Each assessment card displays the job application, the assessment status, and assessment expiration dates.

Note: **Pending Assessments** is a visible change for clients who are currently using Assessment on their Talent Gateways and have the **Candidate Zone** enabled.

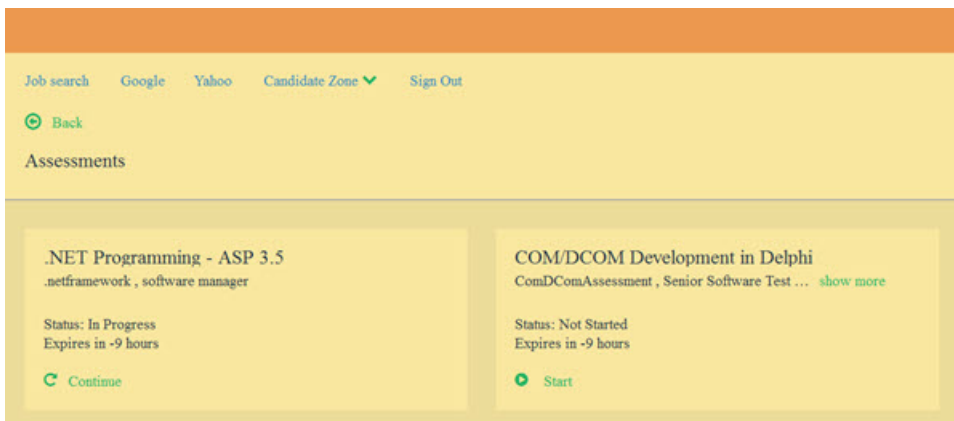
Pending Assessments

When candidates complete job applications, they can access **Assessments** from the completed job application page or candidates can:

- Select the **Candidate Zone** drop-down menu.
- Select **Assessments**.



The Assessments section opens and displays the candidate's assessments.



Candidates can select **Start** to start an assessment or **Continue** to complete an assessment.

- When a candidate completes an assessment:
 - A confirmation message opens confirming the completion of the **Assessment**. A check box for **Don't show this message again** displays on the confirmation message. Candidates can close this confirmation message or select the check box. Selecting the check box cancels the confirmation message for future assessments.
 - An alert displays informing the candidate that completed assessments are removed from the **Assessments** section.

Note: Clients can contact their IBM Kenexa representative to learn more about configuring assessments.

Profile Import - XML SSO Integration

This release supports an enhancement to the XML SSO Integration.

Respect File Import Field Attributes

For clients with SSO enabled Responsive Apply Talent Gateways with profile import, when internal candidates import their profiles, the import function now respects imported **read-only** fields and those **read-only** fields display as non-editable in the candidate's profile.

Respecting file import field attributes ensures that internal candidates on SSO enabled Talent Gateways cannot edit their profile data outside of their company's HRIS system.

Password Strength - New Default

This release introduces a new **Password Strength** default.

Password Strength - New Default

Starting this release, the default password strength is now set to **Strong** for all existing and new clients. **Strong** passwords must be a minimum of 8 characters, a maximum of 25 characters, contain no spaces, and must contain at least one special characters selected from this extended list { } [] , . < > ' " ? / | \ ~ ! @ # \$ % ^ & * () _ - + =. New passwords cannot match 5 preceding passwords.

Candidates who do not have **Strong** passwords, must reset their password during login when prompted.

Note: The client setting **Talent Gateway password strength** is now hidden and not editable.

Recruiter

The current release of IBM Kenexa BrassRing on Cloud does not include any Recruiter visible changes. Visible changes alter the appearance or performance of the product without requiring any configuration.

Configurable Changes

The current release of IBM Kenexa BrassRing on Cloud includes the following configurable feature. Configurable features must be configured or turned on to be visible and available to users.

Responsive Apply

This release of IBM Kenexa BrassRing on Cloud Responsive Apply does not include any configurable changes.

Recruiter

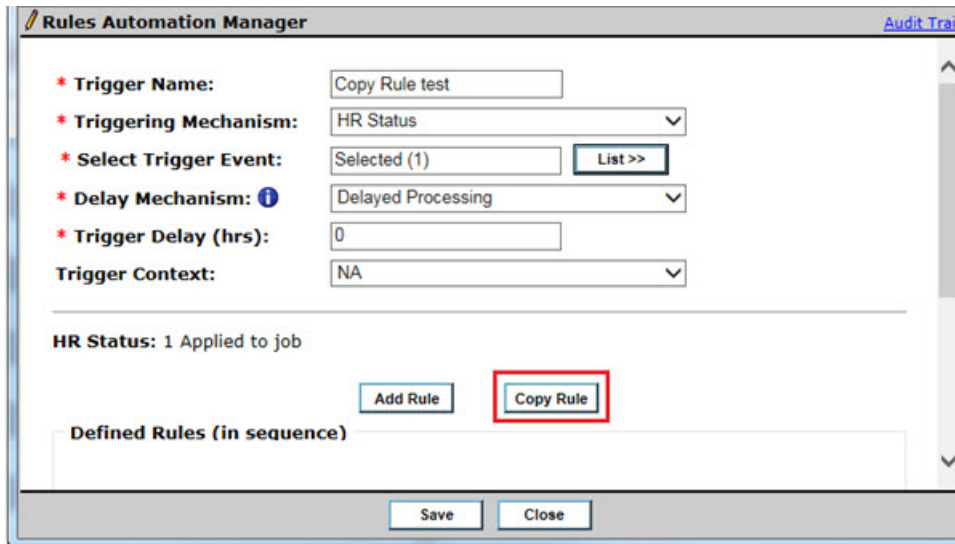
The current release of IBM Kenexa BrassRing on Cloud includes the following Recruiter configurable changes.

RAM Enhancement - Copy Rules

BrassRing Workbench Administrators can now copy and edit existing RAM rules when creating or editing RAM triggers. A new **Copy Rule** option now displays on the Rules Automation Manager page.

RAM Copy Rules

When a BrassRing Workbench Administrator creates or edits a RAM trigger, they can now select a **Copy Rule** option on the Rules Automation Manager page.



Note: Workbench Administrators can only use the **Copy rule** to copy rules from triggers that have the same context. Trigger Mechanism contexts are **Candidate only**, **Req only**, and **Candidate + Req**.

When the **Copy Rule** option is selected, a scaled-select modal opens and displays a list of active and draft triggers **within the same Trigger context** and that have a context of **NA** or **None**. Administrator selects a rule to copy and the copied rule is saved and the name of the new rule now is renamed to **copy of < original rule name>**. The new copied rule queues up as the last rule in the trigger and displays in the Defined Rules section. Closing the edit rule modal saves the rule as per existing functionality.

Note: Triggers with the context of Run triggers across candidates, Run triggers across reqs, Run trigger to pull candidates are not supported and are not options in the scaled-select modal.

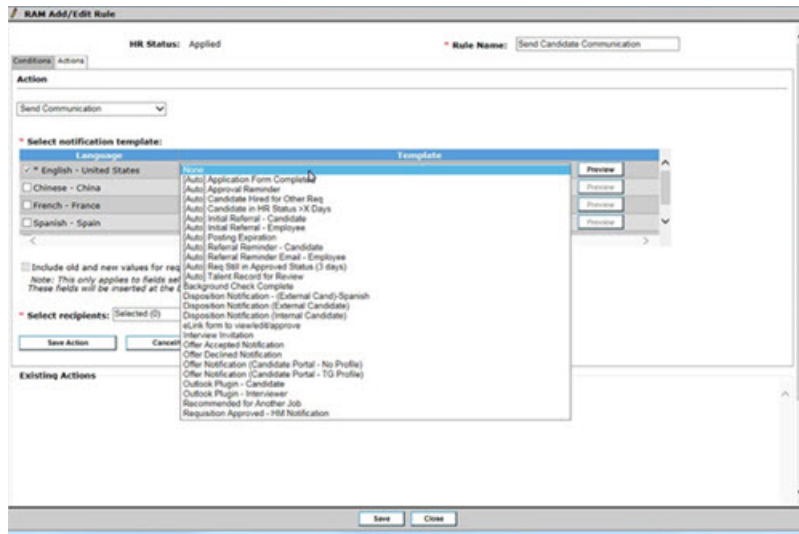
RAM Enhancement

Previously, when Workbench Administrators created or edited RAM triggers and used those triggers to send communications, the template selections included **Active** and **Inactive** templates. Now when Workbench Administrators select templates to send communications, only **Active** communication templates display.

Rules Automation Manager (RAM) Enhancement

In BrassRing Workbench, WB Administrator:

- Browses to **Tools > Automation Manager > Admin**. The Triggers page opens.
- Selects **Add New Trigger** and configures all the fields of the RAM Trigger.
- Selects **Add Rule**.
- Adds **Rule name** and selects **Save and Continue**. The RAM Add/Edit Rule page opens.
- Selects the **Action** tab and then selects **Send Communication** action.
- Selects **Preview** to display only **Active** communication templates.



- Selects an **Active** communication template.
- Completes **Action** and **Configuration** fields for the RAM rule.
- Selects **Save**.

Notices

This information was developed for products and services offered in the US. This material might be available from IBM in other languages. However, you may be required to own a copy of the product or product version in that language in order to access it.

IBM may not offer the products, services, or features discussed in this document in other countries. Consult your local IBM representative for information on the products and services currently available in your area. Any reference to an IBM product, program, or service is not intended to state or imply that only that IBM product, program, or service may be used. Any functionally equivalent product, program, or service that does not infringe any IBM intellectual property right may be used instead. However, it is the user's responsibility to evaluate and verify the operation of any non-IBM product, program, or service.

IBM may have patents or pending patent applications covering subject matter described in this document. The furnishing of this document does not grant you any license to these patents. You can send license inquiries, in writing, to:

*IBM Director of Licensing
IBM Corporation
North Castle Drive, MD-NC119
Armonk, NY 10504-1785
US*

For license inquiries regarding double-byte character set (DBCS) information, contact the IBM Intellectual Property Department in your country or send inquiries, in writing, to:

*Intellectual Property Licensing
Legal and Intellectual Property Law
IBM Japan Ltd.
19-21, Nihonbashi-Hakozakicho, Chuo-ku
Tokyo 103-8510, Japan*

INTERNATIONAL BUSINESS MACHINES CORPORATION PROVIDES THIS PUBLICATION "AS IS" WITHOUT WARRANTY OF ANY KIND, EITHER EXPRESS OR IMPLIED, INCLUDING, BUT NOT LIMITED TO, THE IMPLIED WARRANTIES OF NON-INFRINGEMENT, MERCHANTABILITY OR FITNESS FOR A PARTICULAR PURPOSE. Some jurisdictions do not allow disclaimer of express or implied warranties in certain transactions, therefore, this statement may not apply to you.

This information could include technical inaccuracies or typographical errors. Changes are periodically made to the information herein; these changes will be incorporated in new editions of the publication. IBM may make improvements and/or changes in the product(s) and/or the program(s) described in this publication at any time without notice.

Any references in this information to non-IBM websites are provided for convenience only and do not in any manner serve as an endorsement of those websites. The materials at those websites are not part of the materials for this IBM product and use of those websites is at your own risk.

IBM may use or distribute any of the information you provide in any way it believes appropriate without incurring any obligation to you.

Licensees of this program who wish to have information about it for the purpose of enabling: (i) the exchange of information between independently created programs and other programs (including this one) and (ii) the mutual use of the information which has been exchanged, should contact:

*IBM Director of Licensing
IBM Corporation
North Castle Drive, MD-NC119
Armonk, NY 10504-1785
US*

Such information may be available, subject to appropriate terms and conditions, including in some cases, payment of a fee.

The licensed program described in this document and all licensed material available for it are provided by IBM under terms of the IBM Customer Agreement, IBM International Program License Agreement or any equivalent agreement between us.

The performance data discussed herein is presented as derived under specific operating conditions. Actual results may vary.

The client examples cited are presented for illustrative purposes only. Actual performance results may vary depending on specific configurations and operating conditions.

The performance data and client examples cited are presented for illustrative purposes only. Actual performance results may vary depending on specific configurations and operating conditions.

Information concerning non-IBM products was obtained from the suppliers of those products, their published announcements or other publicly available sources. IBM has not tested those products and cannot confirm the accuracy of performance, compatibility or any other claims related to non-IBM products. Questions on the capabilities of non-IBM products should be addressed to the suppliers of those products.

Statements regarding IBM's future direction or intent are subject to change or withdrawal without notice, and represent goals and objectives only.

All IBM prices shown are IBM's suggested retail prices, are current and are subject to change without notice. Dealer prices may vary.

This information is for planning purposes only. The information herein is subject to change before the products described become available.

This information contains examples of data and reports used in daily business operations. To illustrate them as completely as possible, the examples include the names of individuals, companies, brands, and products. All of these names are fictitious and any similarity to actual people or business enterprises is entirely coincidental.

COPYRIGHT LICENSE:

This information contains sample application programs in source language, which illustrate programming techniques on various operating platforms. You may copy, modify, and distribute these sample programs in any form without payment to IBM, for the purposes of developing, using, marketing or distributing application programs conforming to the application programming interface for the operating platform for which the sample programs are written. These examples have not been thoroughly tested under all conditions. IBM, therefore, cannot guarantee or imply reliability, serviceability, or function of these programs. The sample programs are provided "AS IS", without warranty of any kind. IBM shall not be liable for any damages arising out of your use of the sample programs.

Programming interface information

Trademarks

IBM, the IBM logo, and ibm.com are trademarks or registered trademarks of International Business Machines Corp., registered in many jurisdictions worldwide. Other product and service names might be trademarks of IBM or other companies. A current list of IBM trademarks is available on the web at "Copyright and trademark information" at www.ibm.com/legal/copytrade.shtml.

Terms and conditions for product documentation

Permissions for the use of these publications are granted subject to the following terms and conditions.

Applicability

These terms and conditions are in addition to any terms of use for the IBM website.

Personal use

You may reproduce these publications for your personal, noncommercial use provided that all proprietary notices are preserved. You may not distribute, display or make derivative work of these publications, or any portion thereof, without the express consent of IBM.

Commercial use

You may reproduce, distribute and display these publications solely within your enterprise provided that all proprietary notices are preserved. You may not make derivative works of these publications, or reproduce, distribute or display these publications or any portion thereof outside your enterprise, without the express consent of IBM.

Rights

Except as expressly granted in this permission, no other permissions, licenses or rights are granted, either express or implied, to the publications or any information, data, software or other intellectual property contained therein.

IBM reserves the right to withdraw the permissions granted herein whenever, in its discretion, the use of the publications is detrimental to its interest or, as determined by IBM, the above instructions are not being properly followed.

You may not download, export or re-export this information except in full compliance with all applicable laws and regulations, including all United States export laws and regulations.

IBM MAKES NO GUARANTEE ABOUT THE CONTENT OF THESE PUBLICATIONS. THE PUBLICATIONS ARE PROVIDED "AS-IS" AND WITHOUT WARRANTY OF ANY KIND, EITHER EXPRESSED OR IMPLIED, INCLUDING BUT NOT LIMITED TO IMPLIED WARRANTIES OF MERCHANTABILITY, NON-INFRINGEMENT, AND FITNESS FOR A PARTICULAR PURPOSE.

IBM Online Privacy Statement

Safety and environmental notices